

APPENDIX B

Level of Service (LOS) Maps

No-Build
2020

Level of Service

No-Build

2020 AM Peak (7:00 – 8:00)



Level of Service

- ◆ A - C
- ◆ D

0 .15 .3 .45

Miles

Level of Service

No-Build

2020 PM Peak (4:30 – 5:30)



Level of Service

- ◆ A - C
- ◆ D
- ◆ E

0 .15 .3 .45

Miles

E+C
2030

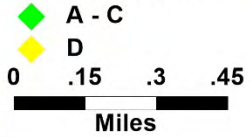
Level of Service

E+C

2030 AM Peak (7:00 – 8:00)



Level of Service



Level of Service

E+C

2030 PM Peak (4:30 – 5:30)



Level of Service

- ◆ A - C
- ◆ D
- ◆ E

0 .15 .3 .45

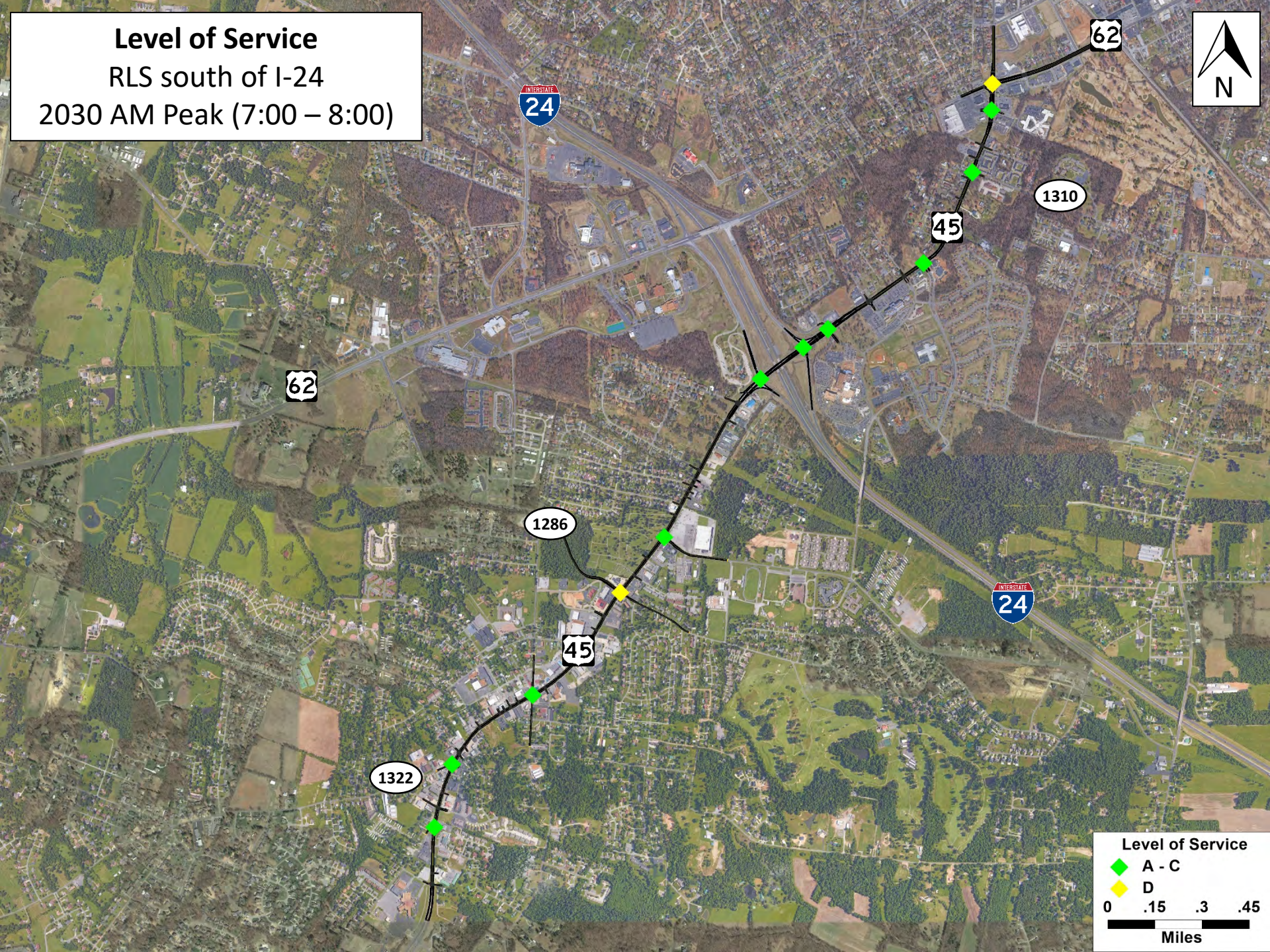
Miles

Reversible Lanes System south of I-24 2030

Level of Service

RLS south of I-24

2030 AM Peak (7:00 – 8:00)



Level of Service
RLS south of I-24
2030 PM Peak (4:30 – 5:30)



Level of Service

- ◆ A - C
- ◆ D
- ◆ E

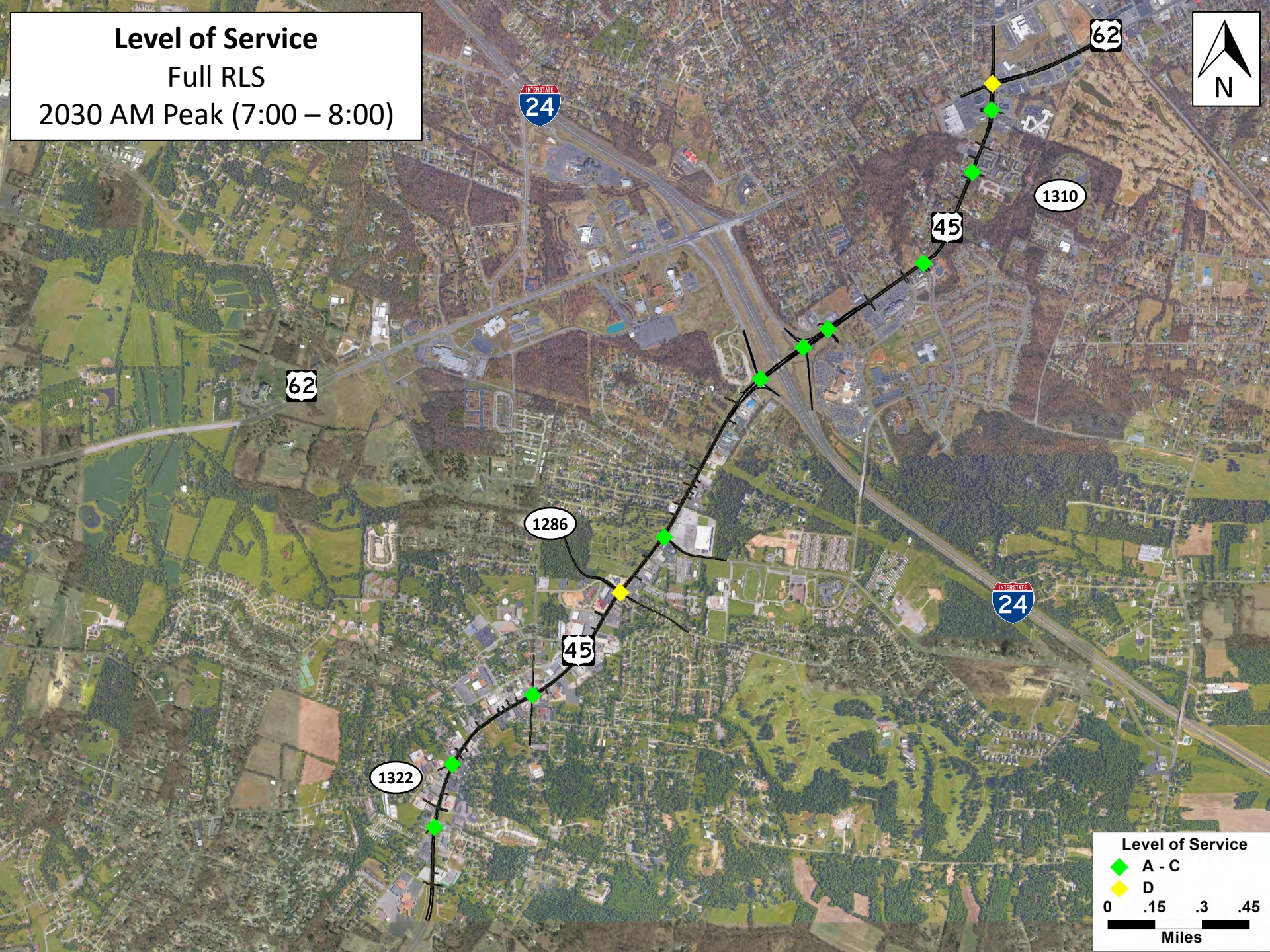
0 .15 .3 .45
Miles

Full Reversible Lanes System 2030

Level of Service

Full RLS

2030 AM Peak (7:00 – 8:00)



Level of Service

◆ A - C

◆ D

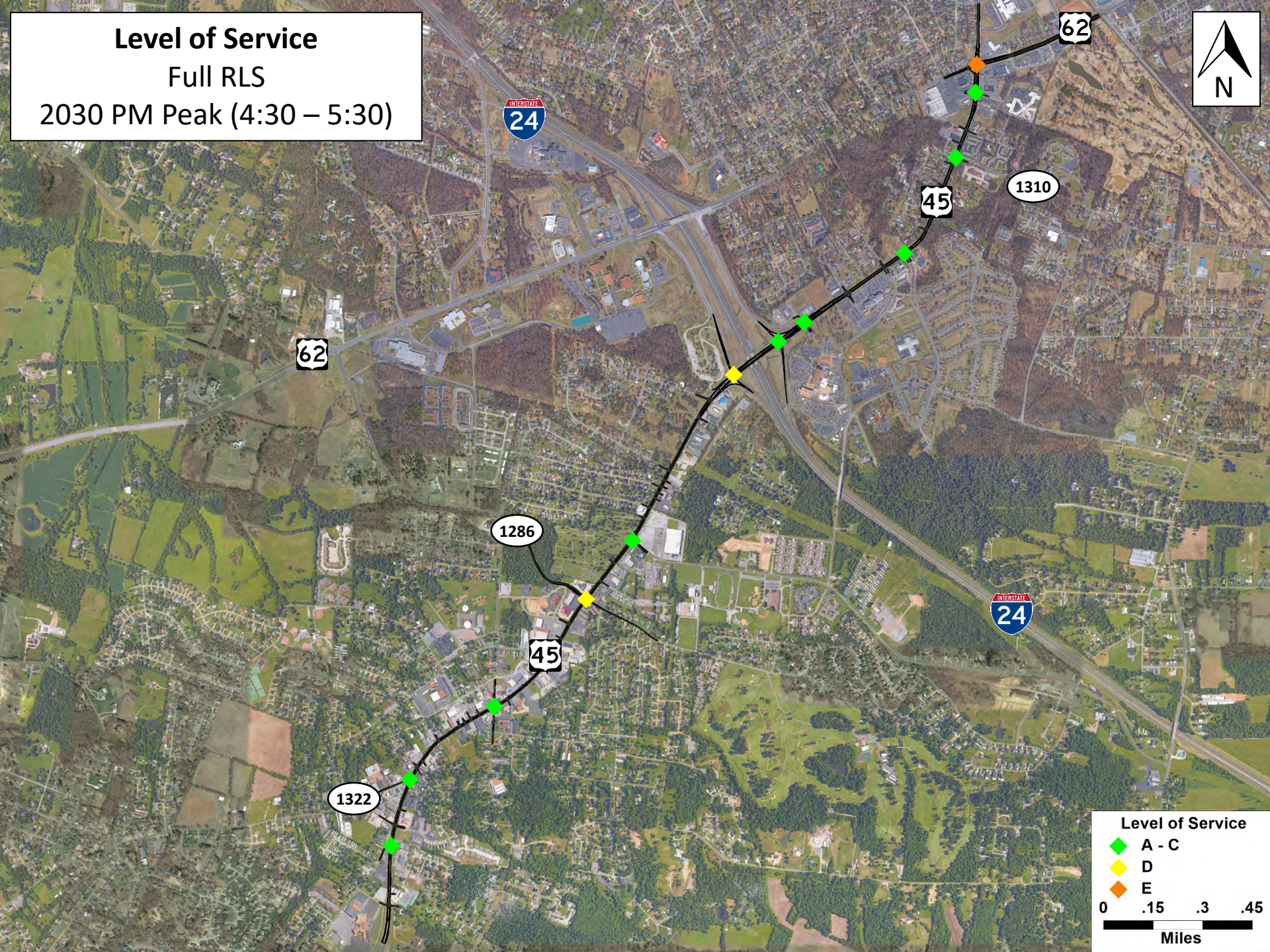
0 .15 .3 .45

Miles

Level of Service

Full RLS

2030 PM Peak (4:30 – 5:30)



Level of Service

- ◆ A - C
- ◆ D
- ◆ E

0 .15 .3 .45
Miles

7-Lane Widening 2030

Level of Service
7-Lane Widening
2030 AM Peak (7:00 – 8:00)



Level of Service

- ◆ A - C
- ◆ D

0 .15 .3 .45

Miles

Level of Service
7-Lane Widening
2030 PM Peak (4:30 – 5:30)



Level of Service

- ◆ A - C
- ◆ E

0 .15 .3 .45

Miles